

DRAFT COASTAL ZONE MANAGEMENT PLAN TAMIL NADU

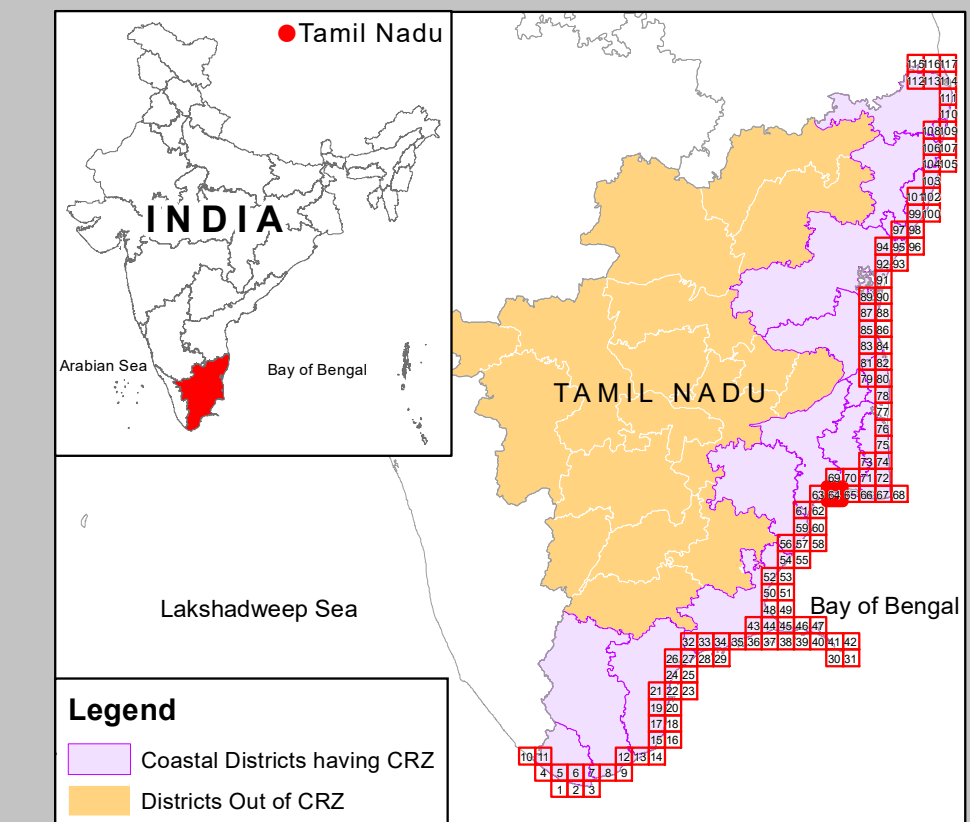
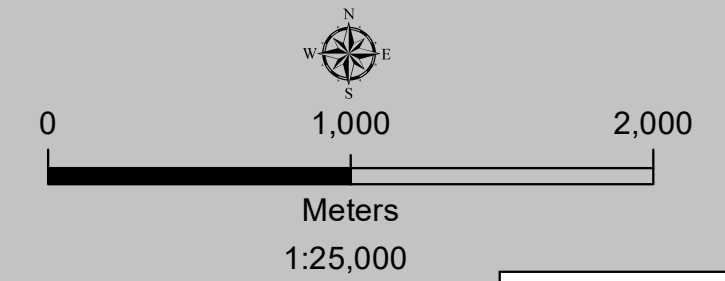
Thanjavur & Tiruvavur Districts

Edition: June, 2023

Sheet No: C 44 H 7 / SE

Projection :- UTM Datum :- WGS 1984

Map No : TN 64



Legend

- Coastal Districts having CRZ
- Districts Out of CRZ

Legend

- Lighthouse
- Fish Landing Centre
- Fishing Harbour
- Fishing Port
- Helipad
- Health Center/Hospital
- Multipurpose Evacuation Centre
- Educational Institution
- Road
- Railway Line
- Seawall
- High Tide Line
- Low Tide Line
- Port Limit
- Fish Drying or Boat Parking Area
- Fisherman Settlement
- Fishing Wards
- Breakwater/Jetty/Groyne
- Survey Plots
- Village Boundary
- Municipal/Urban Boundary
- Taluk Boundary
- District Boundary

CRZ Lines & Boundary

- Hazard Line
- 20m CRZ Line for Island*
- 50m CRZ Line - CRZ IIIA (NDZ)
- 200m CRZ Line - CRZ IIIB (NDZ)
- CVCA Boundary
- CRZ Boundary
- Sand Dune Beyond CRZ Boundary (500m Line, 50m Line for Bay, 50m or width of the creek whichever is less along the tidal influenced water bodies and 50m Mangrove Buffer Zone)

CRZ CATEGORY

CRZ - I

- Eco Sensitive Zone - CRZ IA
- CRZ - IA
- 50 m Mangrove Buffer Zone - CRZ IA
- CRZ - IB

CRZ - II

- CRZ - II

CRZ - III

- No Development Zone
- 50 to 500m from HTL - CRZ IIIA
- 200 to 500m from HTL - CRZ IIIB

CRZ - IV

- CRZ - IVB
- CRZ - IVA (Upto 12 NM)

ABBREVIATIONS

- CRZ : Coastal Regulation Zone
- NDZ : No Development Zone
- CVCA : Critically Vulnerable Coastal Areas

NOTE

- CRZ - I areas are further classified on Land Use map and CZMP map shall be used along with Coastal Land Use map.
- 50m Mangrove Buffer Zone is provided for both Government land and Private land.
- ISLANDS: 20m CRZ Line from HTL is valid only after approval of IMP of the particular island. IMPs of the particular island shall be prepared by concerned States/UTs and got approved by MoEF&CC.

Updated During 2019 - 2022

PREPARED AS PER COASTAL REGULATION ZONE NOTIFICATION, 2019

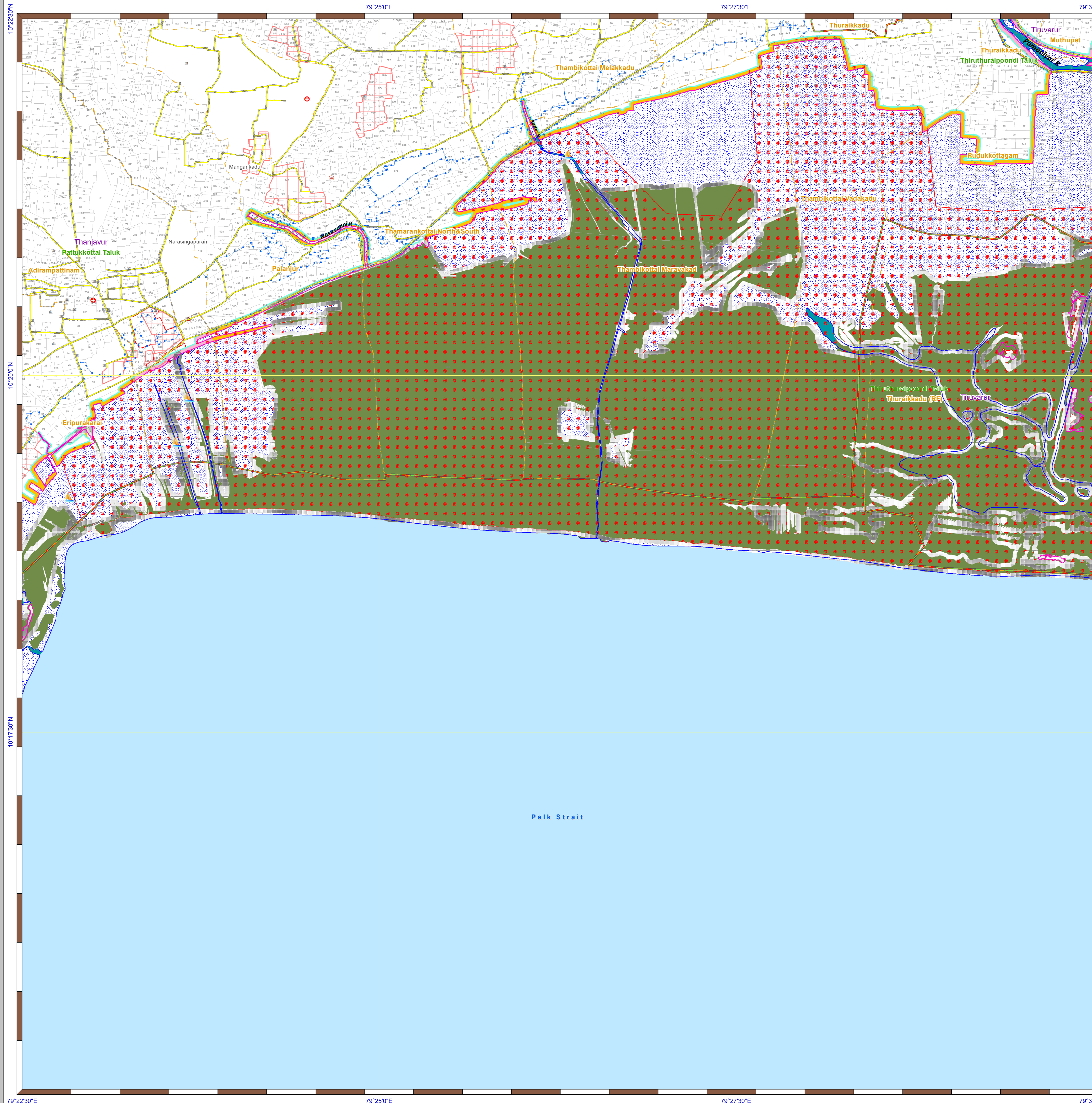
Prepared by



National Centre for Sustainable Coastal Management
(Ministry of Environment, Forest & Climate Change)
Chennai - 600 025



Department of Environment and Climate Change
Government of Tamil Nadu



DRAFT COASTAL ZONE MANAGEMENT PLAN TAMIL NADU

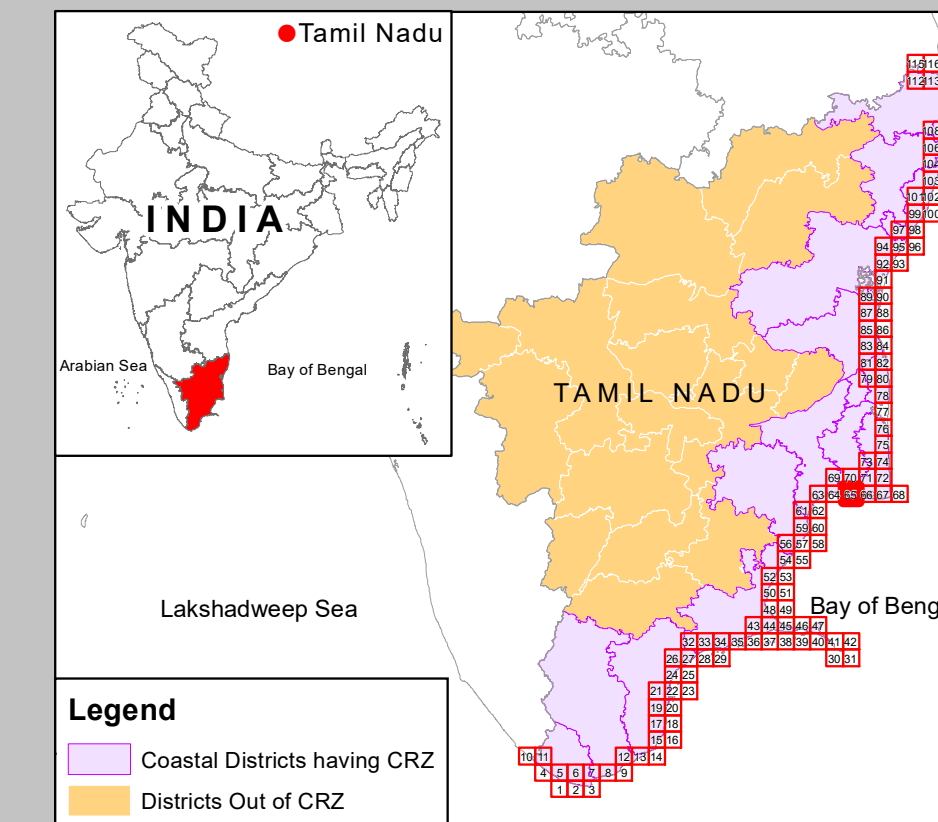
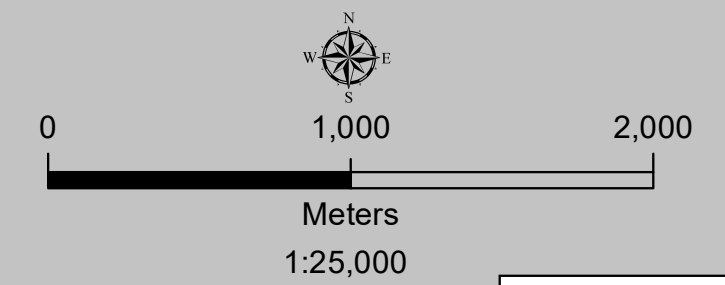
Thanjavur & Tiruvarur Districts

Edition: June, 2023

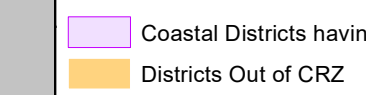
Sheet No: C 44 H 11 / SW

Projection :- UTM Datum :- WGS 1984

Map No : TN 65



Legend



Legend

- Lighthouse
- Fish Landing Centre
- Fishing Harbour
- Fishing Port
- Helipad
- Health Center/Hospital
- Multipurpose Evacuation Centre
- Educational Institution
- Road
- Railway Line
- Seawall
- High Tide Line
- Low Tide Line
- Port Limit
- Fish Drying or Boat Parking Area
- Fisherman Settlement
- Fishing Wards
- Breakwater/Jetty/Groyne
- Survey Plots
- Village Boundary
- Municipal/Urban Boundary
- Taluk Boundary
- District Boundary

CRZ Lines & Boundary

- Hazard Line
- 20m CRZ Line for Island*
- 50m CRZ Line - CRZ IIIA (NDZ)
- 200m CRZ Line - CRZ IIIB (NDZ)
- CVCA Boundary
- CRZ Boundary
- Sand Dune Beyond CRZ Boundary (500m Line, 50m Line for Bay, 50m or width of the creek whichever is less along the tidal influenced water bodies and 50m Mangrove Buffer Zone)

CRZ CATEGORY

CRZ - I

- Eco Sensitive Zone - CRZ IA
- CRZ - IA
- 50 m Mangrove Buffer Zone - CRZ IA
- CRZ - IB

CRZ - II

- CRZ - II

CRZ - III

- No Development Zone
- 50 to 500m from HTL - CRZ IIIA
- 200 to 500m from HTL - CRZ IIIB

CRZ - IV

- CRZ - IVB
- CRZ - IVA (Upto 12 NM)

ABBREVIATIONS

- CRZ : Coastal Regulation Zone
- NDZ : No Development Zone
- CVCA : Critically Vulnerable Coastal Areas

NOTE

- CRZ - I areas are further classified on Land Use map and CZMP map shall be used along with Coastal Land Use map.
- 50m Mangrove Buffer Zone is provided for both Government land and Private land
- ISLANDS: 20m CRZ Line from HTL is valid only after approval of IMP of the particular island. IMPs of the particular island shall be prepared by concerned States/UTs and got approved by MoEF&CC.

Updated During 2019 - 2022

PREPARED AS PER COASTAL REGULATION ZONE NOTIFICATION, 2019

Prepared by



National Centre for Sustainable Coastal Management
(Ministry of Environment, Forest & Climate Change)
Chennai - 600 025



Department of Environment and Climate Change
Government of Tamil Nadu



DATA SOURCE

- National Centre for Sustainable Coastal Management
 - HTL, LTL 2) CVCA 3) CRZ - IA 4) Infrastructure Facilities such as Lighthouse, Road, Seawall, Breakwater/Jetty/Groyne.
- Survey of India
 - Hazard Line
- Tamil Nadu State Coastal Zone Management Authority
 - Administrative Boundaries,
 - Infrastructure Facilities such as Health Center/Hospital, Helipad, Multipurpose Evacuation Centre, Education Institution, Fish Landing Centre, Fishing Harbour, Fish Drying or Boat Parking Area,
 - Fisherman Settlement & Fishing ward,
 - Port Limit etc.

DRAFT COASTAL ZONE MANAGEMENT PLAN TAMIL NADU

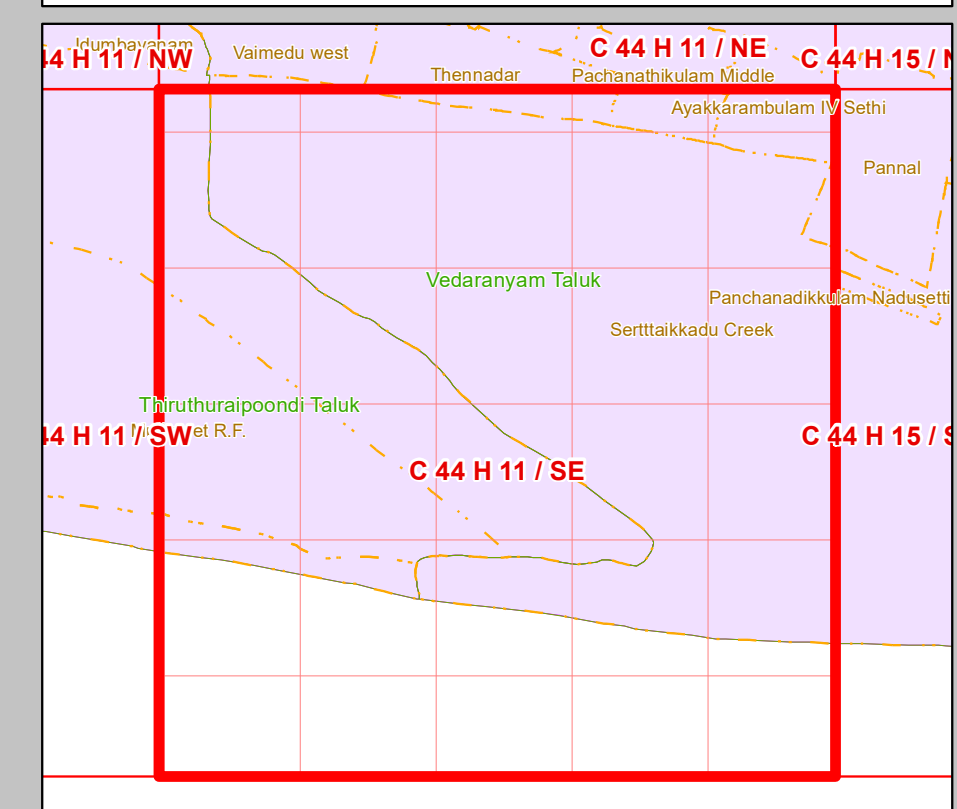
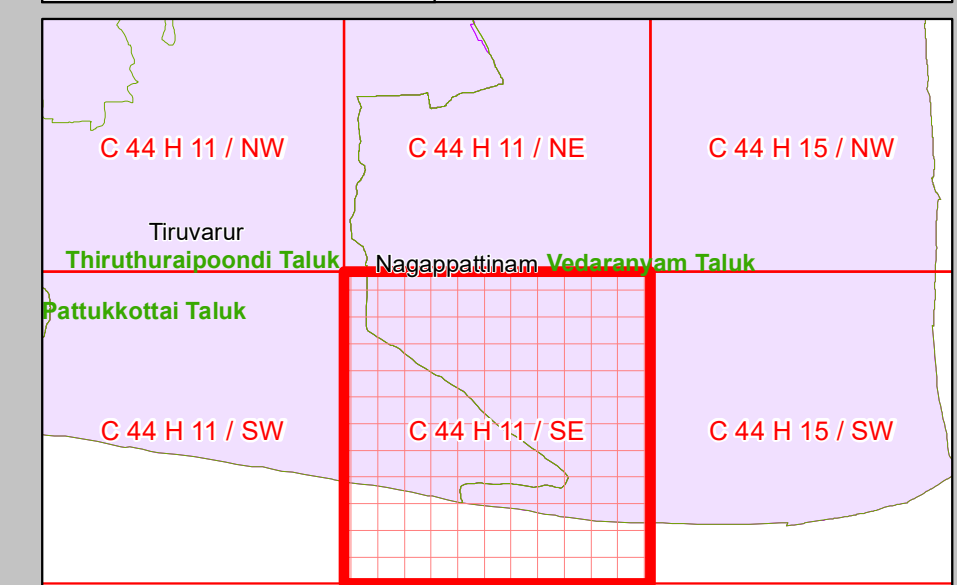
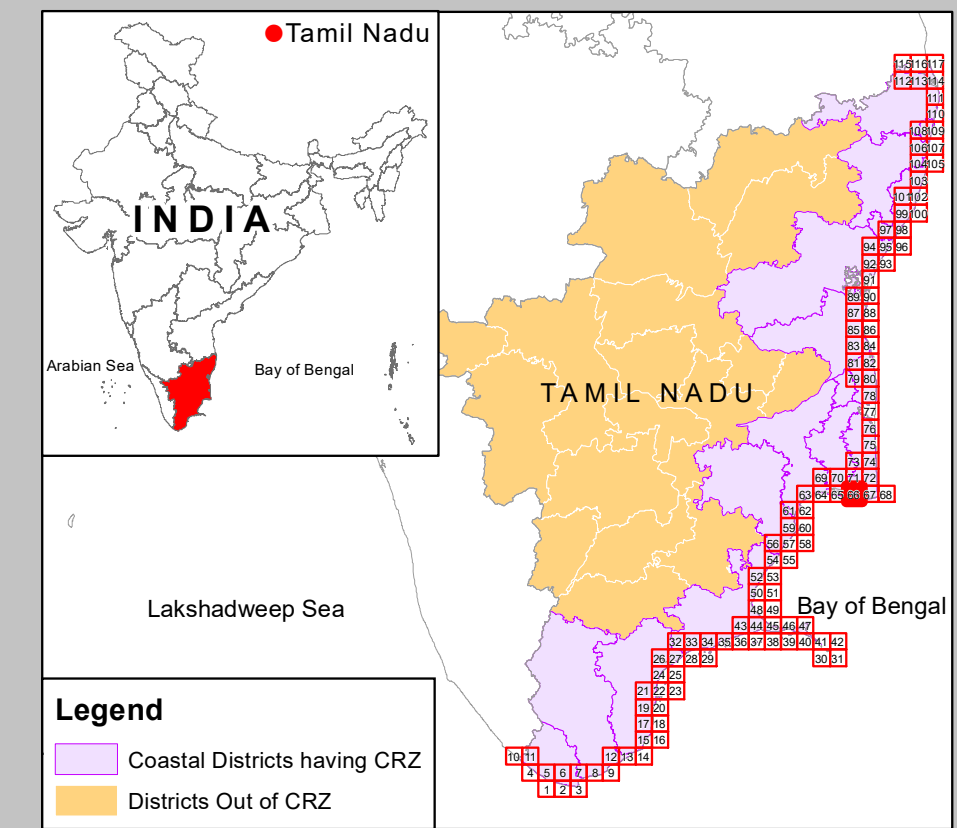
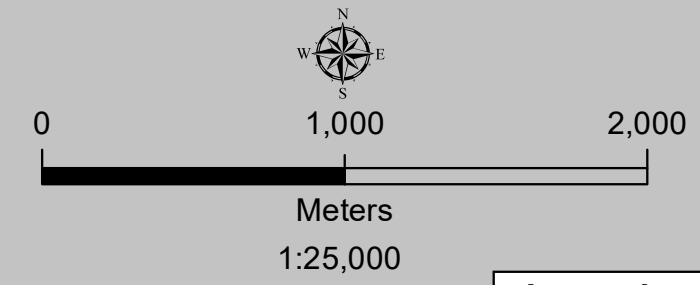
Tiruvarur & Nagapattinam Districts

Edition: June, 2023

Sheet No: C 44 H 11 / SE

Projection :- UTM Datum :- WGS 1984

Map No : TN 66



DATA SOURCE
 I) National Centre for Sustainable Coastal Management
 1) HTL, LTL 2) CVCA 3) CRZ - IA 4) Infrastructure Facilities such as Lighthouse, Road, Seawall, Breakwater/Jetty/Groyne.

II) Survey of India
 1) Hazard Line

III) Tamil Nadu State Coastal Zone Management Authority
 1) Administrative Boundaries,
 2) Infrastructure Facilities such as Health Center/Hospital, Helipad, Multipurpose Evacuation Centre, Education Institution, Fish Landing Centre, Fishing Harbour, Fisherman Settlement & Fishing ward,
 3) Fish Drying or Boat Parking Area,
 4) Port Limit etc.

- Legend**
- Lighthouse
 - Fish Landing Centre
 - Fishing Harbour
 - Fishing Port
 - Helipad
 - Health Center/Hospital
 - Multipurpose Evacuation Centre
 - Educational Institution
 - Road
 - Railway Line
 - Seawall
 - High Tide Line
 - Low Tide Line
 - Port Limit
 - Fish Drying or Boat Parking Area
 - Fisherman Settlement
 - Fishing Wards
 - Breakwater/Jetty/Groyne
 - Survey Plots
 - Village Boundary
 - Municipal/Urban Boundary
 - Taluk Boundary
 - District Boundary

- CRZ Lines & Boundary**
- Hazard Line
 - 20m CRZ Line for Island*
 - 50m CRZ Line - CRZ IIIA (NDZ)
 - 200m CRZ Line - CRZ IIIB (NDZ)
 - CVCA Boundary
 - CRZ Boundary
 - Sand Dune Beyond CRZ Boundary
 (50m Line, 50m Line for Bay, 50m or width of the creek whichever is less along the tidal influenced water bodies and 50m Mangrove Buffer Zone)

- CRZ CATEGORY**
- CRZ - I**
- Eco Sensitive Zone - CRZ IA
 - CRZ - IA
 - 50 m Mangrove Buffer Zone - CRZ IA
 - CRZ - IB
- CRZ - II**
- CRZ - II
- CRZ - III**
- No Development Zone
 - 50 to 500m from HTL - CRZ IIIA
 - 200 to 500m from HTL - CRZ IIIB
- CRZ - IV**
- CRZ - IVB
 - CRZ - IVA (Upto 12 NM)

- ABBREVIATIONS**
- CRZ : Coastal Regulation Zone
 - NDZ : No Development Zone
 - CVCA : Critically Vulnerable Coastal Areas
- NOTE**
- 1) CRZ - I areas are further classified on Land Use map and CZMP map shall be used along with Coastal Land Use map.
 - 2) 50m Mangrove Buffer Zone is provided for both Government land and Private land
 - 3) ISLANDS: 20m CRZ Line from HTL is valid only after approval of IMP of the particular island. IMPs of the particular island shall be prepared by concerned States/UTs and got approved by MoEF&CC.

Updated During 2019 - 2022

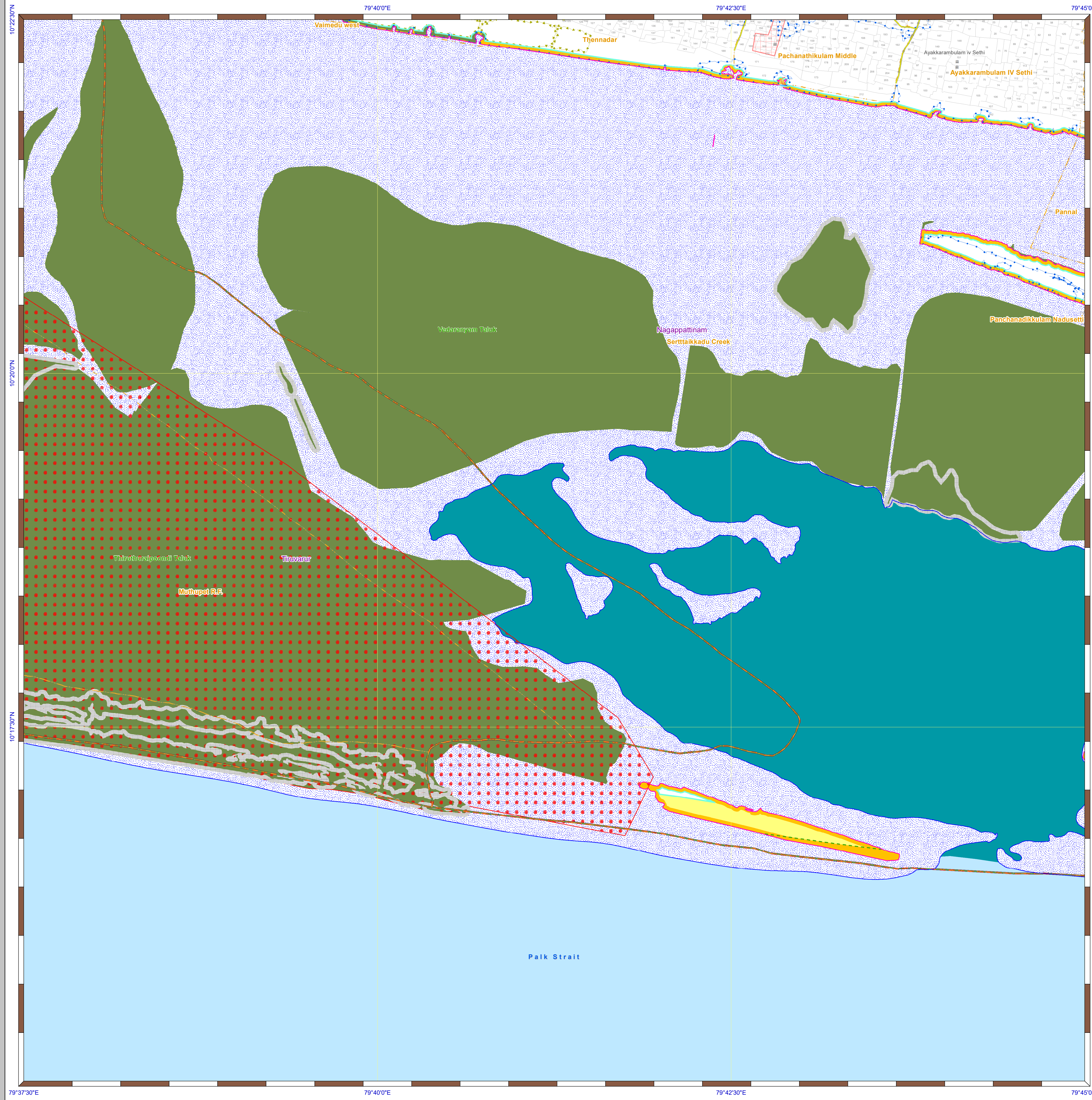
PREPARED AS PER COASTAL REGULATION ZONE NOTIFICATION, 2019



National Centre for Sustainable Coastal Management
 (Ministry of Environment, Forest & Climate Change)
 Chennai - 600 025



Department of Environment and Climate Change
 Government of Tamil Nadu



DRAFT COASTAL ZONE MANAGEMENT PLAN TAMIL NADU

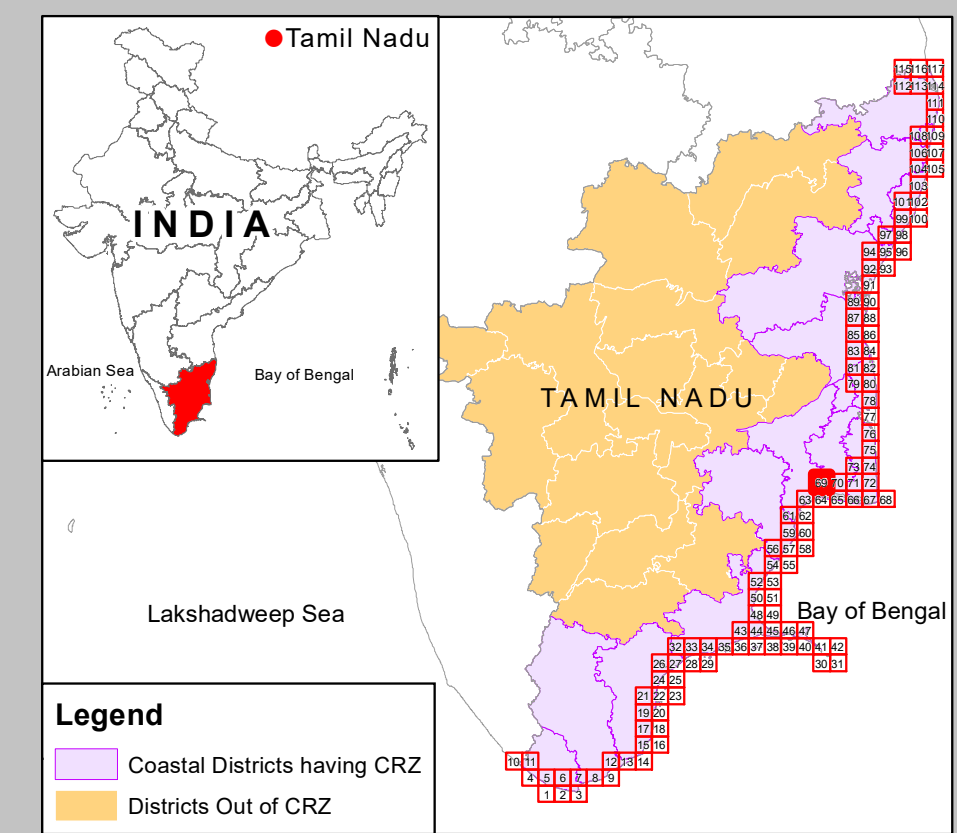
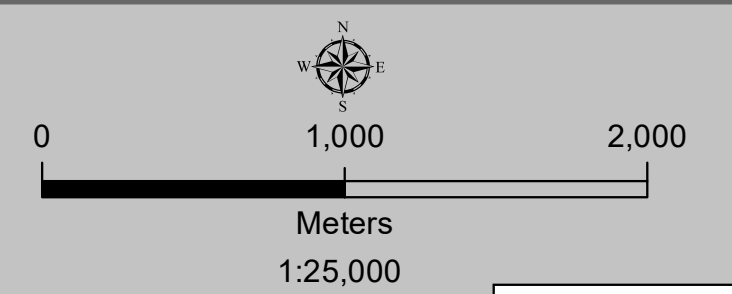
Thanjavur & Tiruvur Districts

Edition: June, 2023

Sheet No: C 44 H 7 / NE

Projection :- UTM Datum :- WGS 1984

Map No : TN 69



Legend

- Coastal Districts having CRZ
- Districts Out of CRZ

Legend

- Lighthouse
- Fish Landing Centre
- Fishing Harbour
- Fishing Port
- Helipad
- Health Center/Hospital
- Multipurpose Evacuation Centre
- Educational Institution
- Road
- Railway Line
- Seawall
- High Tide Line
- Low Tide Line
- Port Limit
- Fish Drying or Boat Parking Area
- Fisherman Settlement
- Fishing Wards
- Breakwater/Jetty/Groyne
- Survey Plots
- Village Boundary
- Municipal/Urban Boundary
- Taluk Boundary
- District Boundary

CRZ Lines & Boundary

- Hazard Line
- 20m CRZ Line for Island*
- 50m CRZ Line - CRZ IIIA (NDZ)
- 200m CRZ Line - CRZ IIIB (NDZ)
- CVCA Boundary
- CRZ Boundary
- Sand Dune Beyond CRZ Boundary (500m Line, 50m Line for Bay, 50m or width of the creek whichever is less along the tidal influenced water bodies and 50m Mangrove Buffer Zone)

CRZ CATEGORY

- CRZ - I**
 - Eco Sensitive Zone - CRZ IA
 - CRZ - IA
 - 50 m Mangrove Buffer Zone - CRZ IA
 - CRZ - IB
- CRZ - II**
 - CRZ - II
- CRZ - III**
 - No Development Zone
 - 50 to 500m from HTL - CRZ IIIA
 - 200 to 500m from HTL - CRZ IIIB
- CRZ - IV**
 - CRZ - IVB
 - CRZ - IVA (Upto 12 NM)

ABBREVIATIONS

- CRZ : Coastal Regulation Zone
- NDZ : No Development Zone
- CVCA : Critically Vulnerable Coastal Areas

NOTE

- CRZ - I areas are further classified on Land Use map and CZMP map shall be used along with Coastal Land Use map.
- 50m Mangrove Buffer Zone is provided for both Government land and Private land.
- ISLANDS: 20m CRZ Line from HTL is valid only after approval of IMP of the particular island. IMPs of the particular island shall be prepared by concerned States/UTs and got approved by MoEF&CC.

Updated During 2019 - 2022

PREPARED AS PER COASTAL REGULATION ZONE NOTIFICATION, 2019

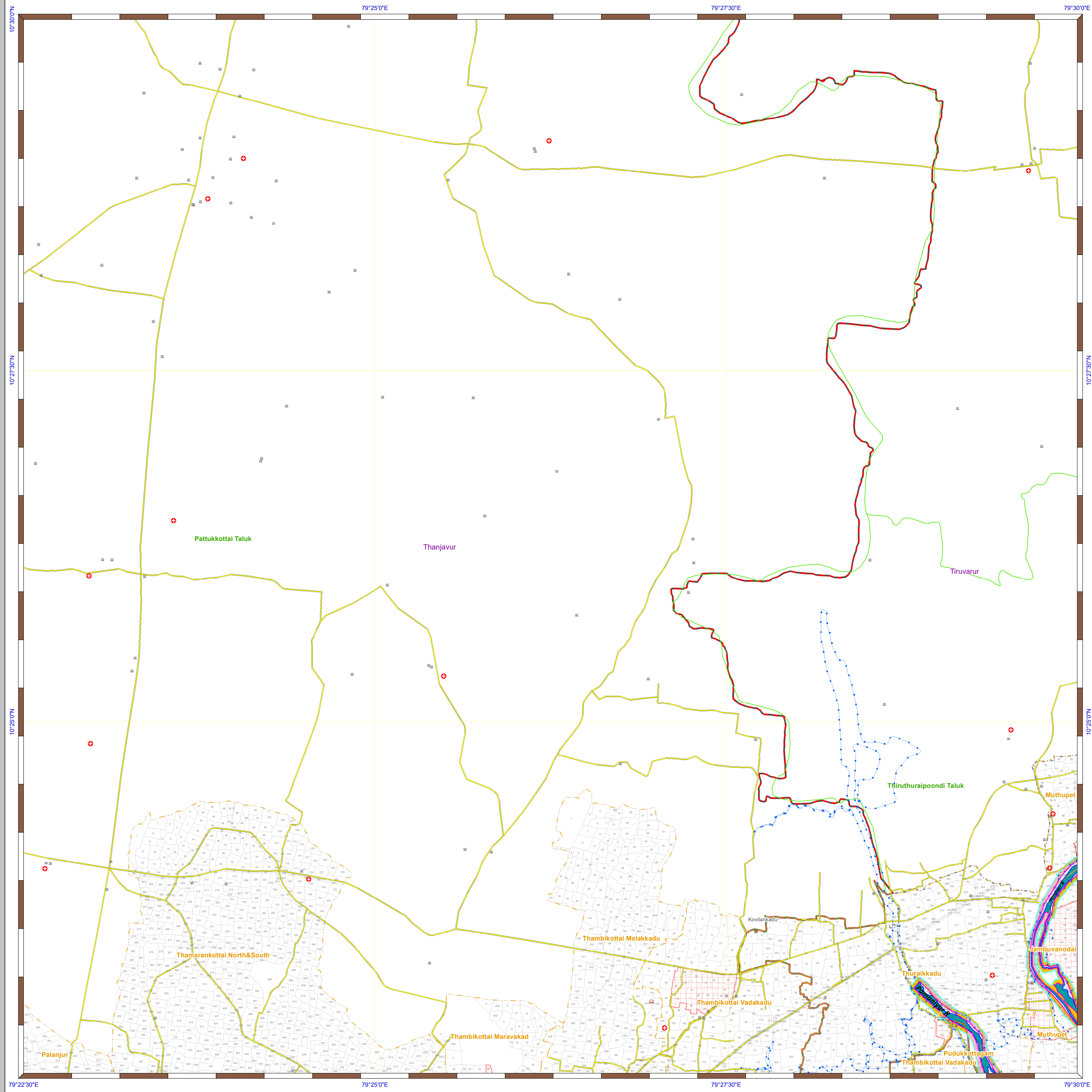
Prepared by



National Centre for Sustainable Coastal Management
(Ministry of Environment, Forest & Climate Change)
Chennai - 600 025



Department of Environment and Climate Change
Government of Tamil Nadu



DRAFT COASTAL ZONE MANAGEMENT PLAN TAMIL NADU

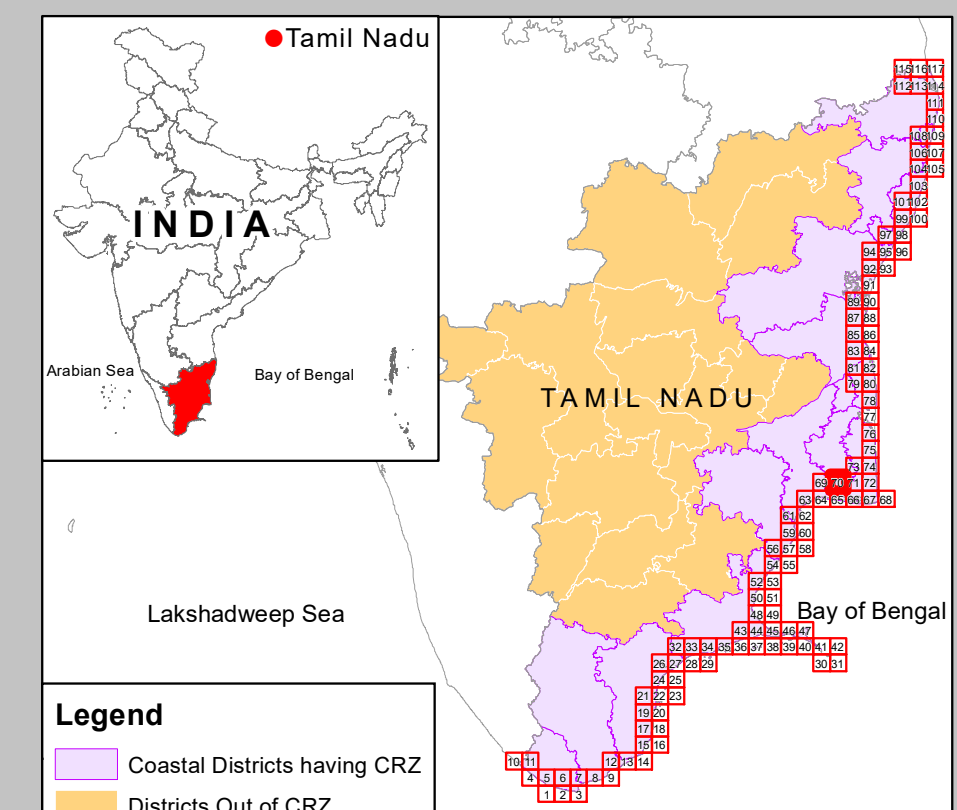
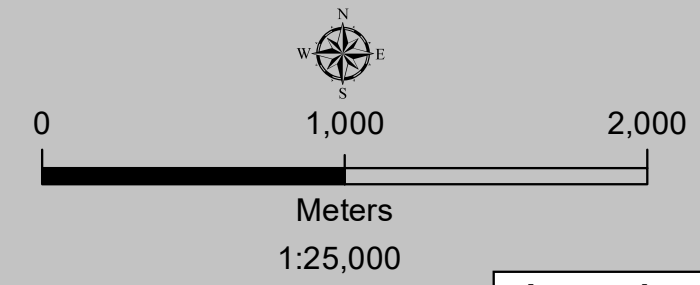
Tiruvallur District

Edition: June, 2023

Sheet No: C 44 H 11 / NW

Projection :- UTM Datum :- WGS 1984

Map No : TN 70



Legend

- Coastal Districts having CRZ
- Districts Out of CRZ

Legend

- Lighthouse
- Fish Landing Centre
- Fishing Harbour
- Fishing Port
- Helipad
- Health Center/Hospital
- Multipurpose Evacuation Centre
- Educational Institution
- Road
- Railway Line
- Seawall
- High Tide Line
- Low Tide Line
- Port Limit
- Fish Drying or Boat Parking Area
- Fisherman Settlement
- Fishing Wards
- Breakwater/Jetty/Groyne
- Survey Plots
- Village Boundary
- Municipal/Urban Boundary
- Taluk Boundary
- District Boundary

CRZ Lines & Boundary

- Hazard Line
- 20m CRZ Line for Island*
- 50m CRZ Line - CRZ IIIA (NDZ)
- 200m CRZ Line - CRZ IIIB (NDZ)
- CVCA Boundary
- CRZ Boundary
- Sand Dune Beyond CRZ Boundary (500m Line, 50m Line for Bay, 50m or width of the creek whichever is less along the tidal influenced water bodies and 50m Mangrove Buffer Zone)

CRZ CATEGORY

CRZ - I

- Eco Sensitive Zone - CRZ IA
- CRZ - IA
- 50 m Mangrove Buffer Zone - CRZ IA
- CRZ - IB

CRZ - II

- CRZ - II

CRZ - III

- No Development Zone
- 50 to 500m from HTL - CRZ IIIA
- 200 to 500m from HTL - CRZ IIIB

CRZ - IV

- CRZ - IVB
- CRZ - IVA (Upto 12 NM)

ABBREVIATIONS

- CRZ : Coastal Regulation Zone
- NDZ : No Development Zone
- CVCA : Critically Vulnerable Coastal Areas

NOTE

- CRZ - I areas are further classified on Land Use map and CZMP map shall be used along with Coastal Land Use map.
- 50m Mangrove Buffer Zone is provided for both Government land and Private land.
- ISLANDS: 20m CRZ Line from HTL is valid only after approval of IMP of the particular island. IMPs of the particular island shall be prepared by concerned States/UTs and got approved by MoEF&CC.

Updated During 2019 - 2022

PREPARED AS PER COASTAL REGULATION ZONE NOTIFICATION, 2019

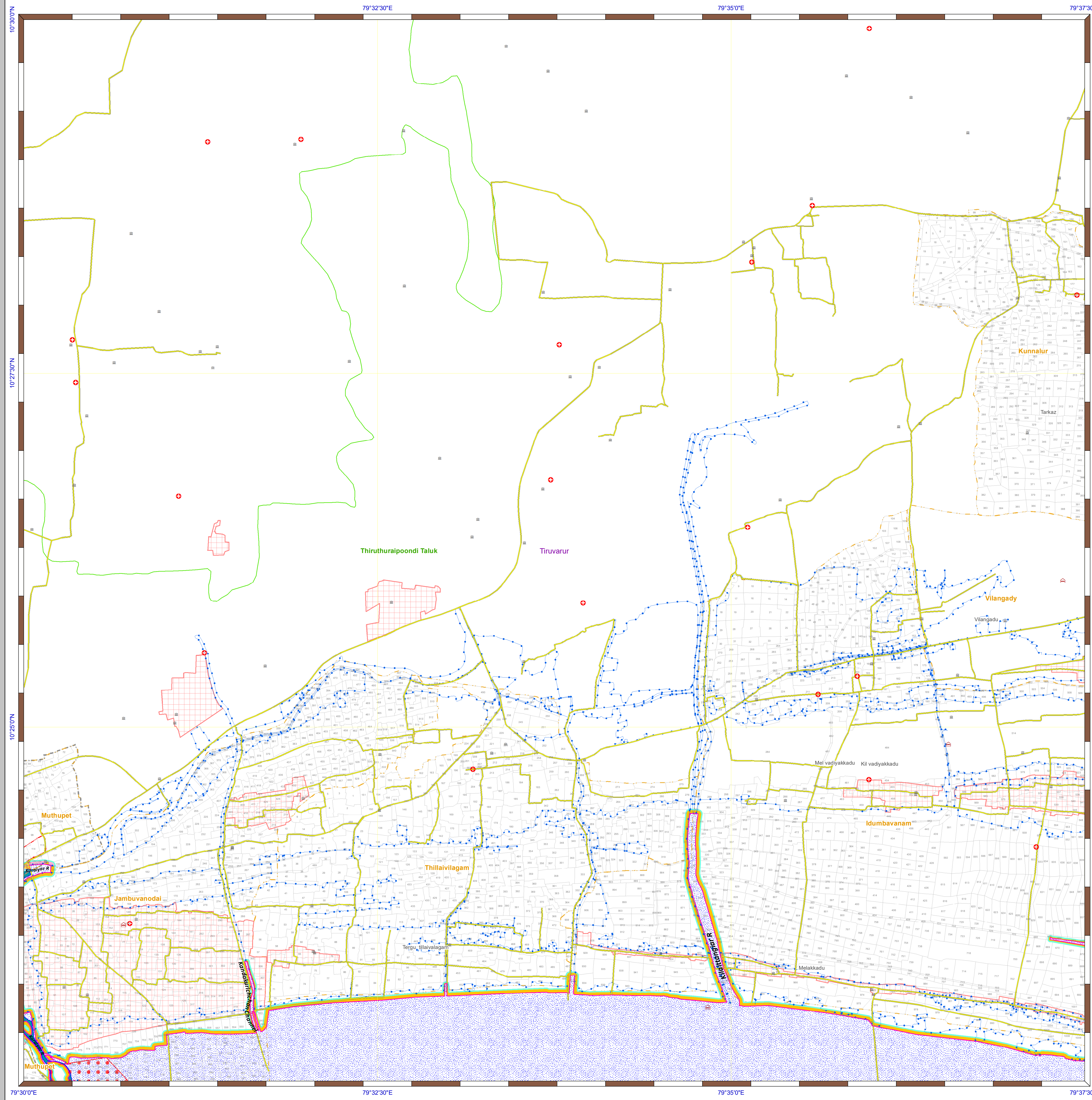
Prepared by

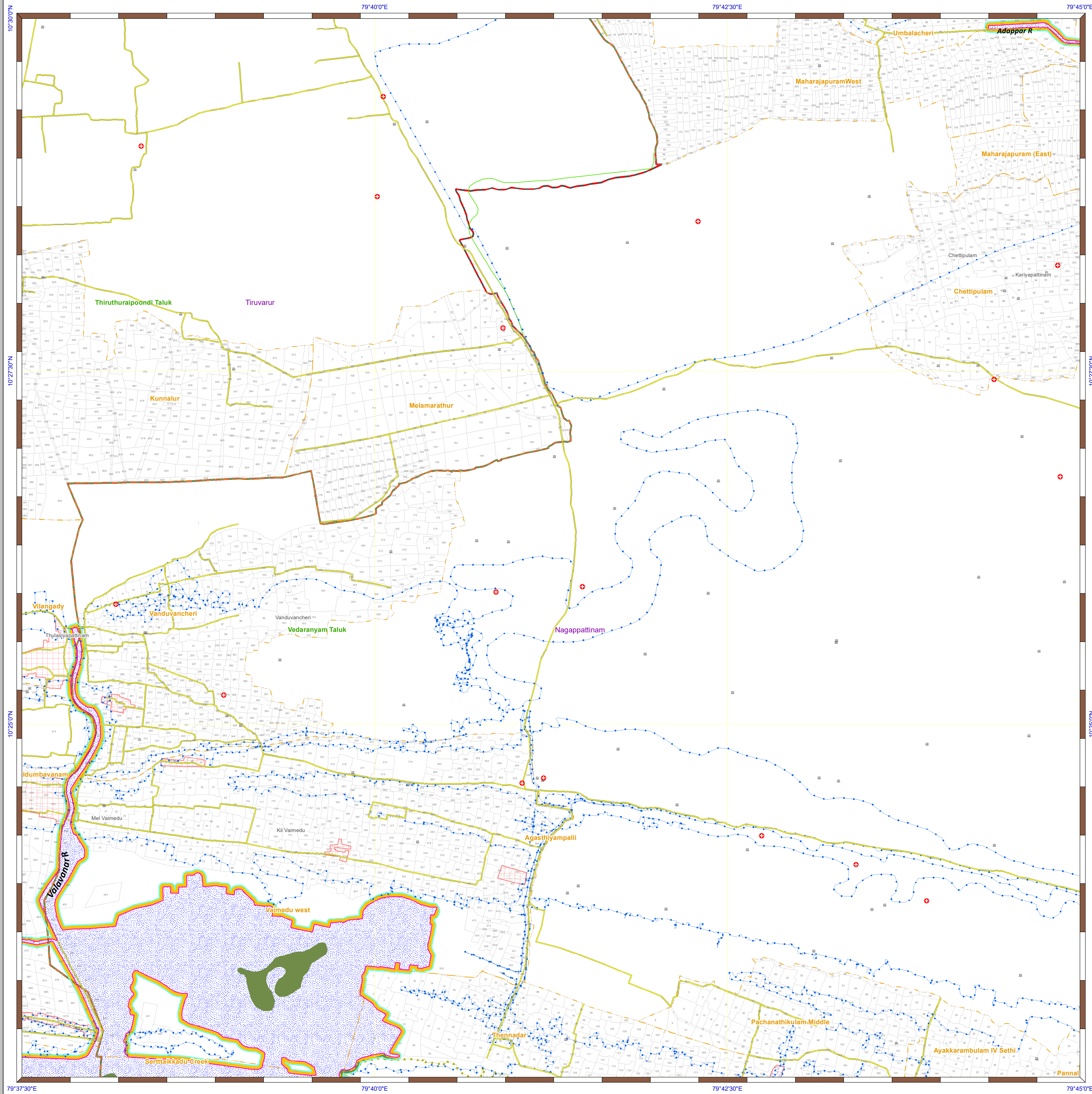


National Centre for Sustainable Coastal Management
(Ministry of Environment, Forest & Climate Change)
Chennai - 600 025



Department of Environment and Climate Change
Government of Tamil Nadu





DRAFT COASTAL ZONE MANAGEMENT PLAN TAMIL NADU

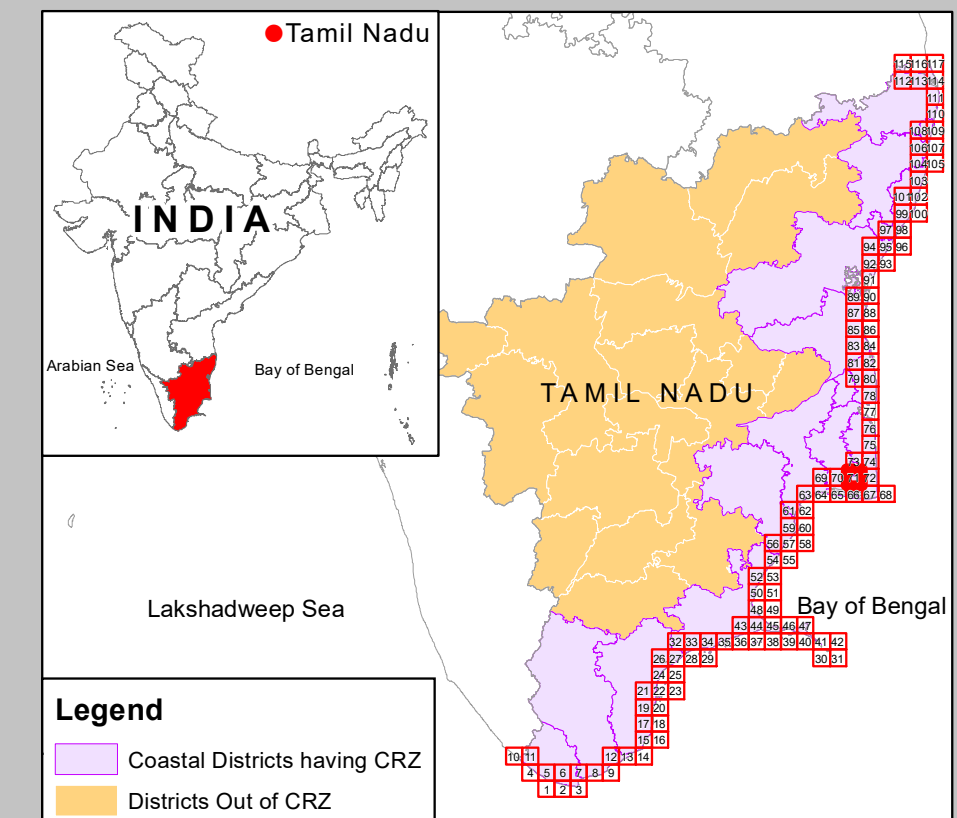
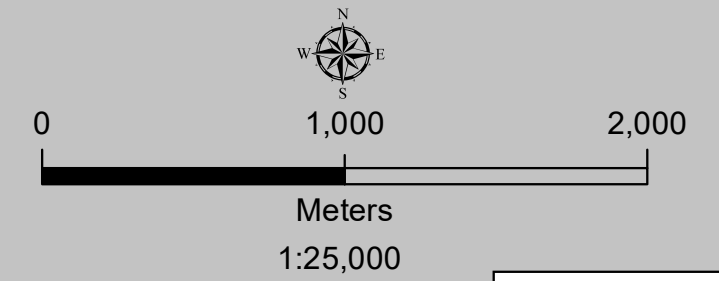
Tiruvur & Nagapattinam Districts

Edition: June, 2023

Sheet No: C 44 H 11 / NE

Projection :- UTM Datum :- WGS 1984

Map No : TN 71



Legend

- Coastal Districts having CRZ
- Districts Out of CRZ

Legend

- Lighthouse
- Fish Landing Centre
- Fishing Harbour
- Fishing Port
- Helipad
- Health Center/Hospital
- Multipurpose Evacuation Centre
- Educational Institution
- Road
- Railway Line
- Seawall
- High Tide Line
- Low Tide Line
- Port Limit
- Fish Drying or Boat Parking Area
- Fisherman Settlement
- Fishing Wards
- Breakwater/Jetty/Groyne
- Survey Plots
- Village Boundary
- Municipal/Urban Boundary
- Taluk Boundary
- District Boundary

CRZ Lines & Boundary

- Hazard Line
- 20m CRZ Line for Island*
- 50m CRZ Line - CRZ IIIA (NDZ)
- 200m CRZ Line - CRZ IIIB (NDZ)
- CVCA Boundary
- CRZ Boundary
- Sand Dune Beyond CRZ Boundary (500m Line, 50m Line for Bay, 50m or width of the creek whichever is less along the tidal influenced water bodies and 50m Mangrove Buffer Zone)

CRZ CATEGORY

- CRZ - I**
 - Eco Sensitive Zone - CRZ IA
 - CRZ - IA
 - 50 m Mangrove Buffer Zone - CRZ IA
 - CRZ - IB
- CRZ - II**
 - CRZ - II
- CRZ - III**
 - No Development Zone
 - 50 to 500m from HTL - CRZ IIIA
 - 200 to 500m from HTL - CRZ IIIB
- CRZ - IV**
 - CRZ - IVB
 - CRZ - IVA (Upto 12 NM)

ABBREVIATIONS

- CRZ : Coastal Regulation Zone
- NDZ : No Development Zone
- CVCA : Critically Vulnerable Coastal Areas

NOTE

- CRZ - I areas are further classified on Land Use map and CZMP map shall be used along with Coastal Land Use map.
- 50m Mangrove Buffer Zone is provided for both Government land and Private land
- ISLANDS: 20m CRZ Line from HTL is valid only after approval of IMP of the particular island. IMPs of the particular island shall be prepared by concerned States/UTs and got approved by MoEF&CC.

DATA SOURCE

- National Centre for Sustainable Coastal Management
 - HTL, LTL 2) CVCA 3) CRZ - IA 4) Infrastructure Facilities such as Lighthouse, Road, Seawall, Breakwater/Jetty/Groyne.
- Survey of India
 - Hazard Line
- Tamil Nadu State Coastal Zone Management Authority
 - Administrative Boundaries,
 - Infrastructure Facilities such as Health Center/Hospital, Helipad, Multipurpose Evacuation Centre, Fishing Harbour, Education Institution, Fish Landing Centre, Fishing Harbour,
 - Fish Drying or Boat Parking Area,
 - Fisherman Settlement & Fishing ward,
 - Port Limit etc.

Updated During 2019 - 2022

PREPARED AS PER COASTAL REGULATION ZONE NOTIFICATION, 2019



National Centre for Sustainable Coastal Management
(Ministry of Environment, Forest & Climate Change)
Chennai - 600 025



Department of Environment and Climate Change
Government of Tamil Nadu